

# SharkFest '16 Europe

## Top 5 False Positives

Wednesday, October 19th, 2016



#sf16eu

Jasper Bongertz  
Trace Wrangler | Packet-Foo

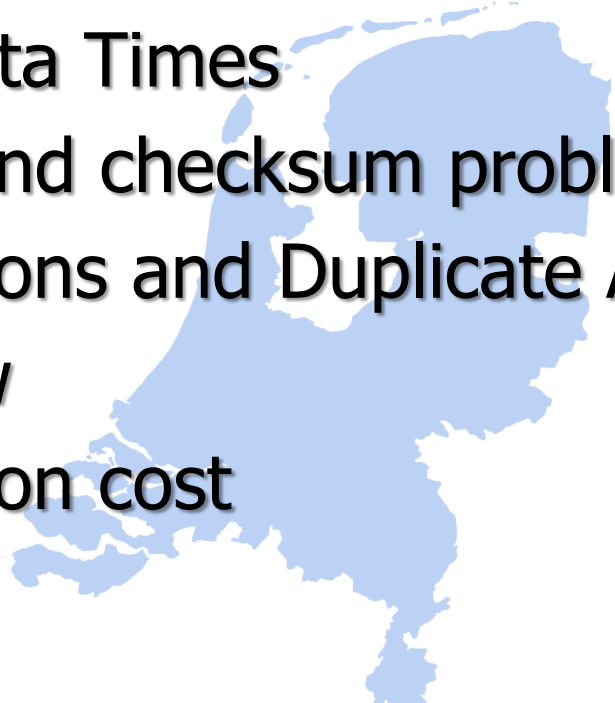


# Before we start...

- Packet-Foo Network Analysis blog:  
<https://blog.packet-foo.com>
- TraceWrangler Website:  
<https://www.tracewrangler.com>
- My Wireshark color profile:  
<https://goo.gl/hsoIKp>



# Agenda

1. Negative Delta Times
  2. Frame size and checksum problems
  3. Retransmissions and Duplicate ACKs
  4. Zero Window
  5. Retransmission cost
- 



# 1. Negative Delta Times





# 1 - Wireshark Demo

No.	IF	Source	Destination	Protocol	Info	Length	TCP Flags	Delta Time	Relative Time	Absolute Time
1	0	81.209.179.69	37.201.152.244	TCP	80→15668 [SYN, ACK] Seq=0 Ack=1 Win=8192 Len=0 MSS=1460 WS=256 SACK_PERM=1	66	.....A..S.	0.000000	0.000000	2013-05-22 00:25:37.457203
2	1	37.201.152.244	81.209.179.69	TCP	15668→80 [SYN] Seq=0 Win=8192 Len=0 MSS=1460 WS=4 SACK_PERM=1	66	.....S.	-0.007976	-0.007976	2013-05-22 00:25:37.449227
3	0	81.209.179.69	37.201.152.244	HTTP	[TCP ACKed unseen segment] HTTP/1.1 200 OK (text/html)	347	.....AP...	0.056228	0.048252	2013-05-22 00:25:37.505455
4	1	37.201.152.244	81.209.179.69	TCP	15668→80 [ACK] Seq=1 Ack=1 Win=65700 Len=0	60	.....A....	-0.047916	0.000336	2013-05-22 00:25:37.457539
5	1	37.201.152.244	81.209.179.69	HTTP	GET / HTTP/1.1	453	.....AP...	0.037275	0.037611	2013-05-22 00:25:37.494814
6	0	81.209.179.69	37.201.152.244	HTTP	[TCP ACKed unseen segment] HTTP/1.1 404 Not Found (text/html)	463	.....AP...	0.178705	0.216316	2013-05-22 00:25:37.673519
7	1	37.201.152.244	81.209.179.69	HTTP	GET /favicon.ico HTTP/1.1	404	.....AP...	-0.007980	0.208336	2013-05-22 00:25:37.665539
8	1	37.201.152.244	81.209.179.69	TCP	15668→80 [ACK] Seq=750 Ack=703 Win=64996 Len=0	60	.....A....	0.209000	0.417336	2013-05-22 00:25:37.874539
9	0	81.209.179.69	37.201.152.244	TCP	80→15668 [FIN, ACK] Seq=703 Ack=750 Win=130816 Len=0	60	.....A...F	5.307168	5.724504	2013-05-22 00:25:43.181707
10	1	37.201.152.244	81.209.179.69	TCP	15668→80 [ACK] Seq=750 Ack=704 Win=64996 Len=0	60	.....A....	0.000303	5.724807	2013-05-22 00:25:43.182010
11	1	37.201.152.244	81.209.179.69	TCP	15668→80 [FIN, ACK] Seq=750 Ack=704 Win=64996 Len=0	60	.....A...F	0.000001	5.724808	2013-05-22 00:25:43.182011
12	0	81.209.179.69	37.201.152.244	TCP	80→15668 [ACK] Seq=704 Ack=751 Win=130816 Len=0	60	.....A....	0.011008	5.735816	2013-05-22 00:25:43.193019



## 2. Frame size & checksum problems





# 2 - Wireshark Demo

No.	IF	Source	Destination	Protocol	Info	Length	TCP Flags
1	0	192.168.124.100	192.168.124.2	TCP	53244→902 [SYN] Seq=0 Win=8192 [TCP CHECKSUM INCORRECT] Len=0 MSS=1460 WS=4 SA...	66	.....S.
2	0	192.168.124.2	192.168.124.100	TCP	902→53244 [SYN, ACK] Seq=0 Ack=1 Win=65535 Len=0 MSS=1460 WS=512 SACK_PERM=1	66	.....A..S.
3	0	192.168.124.100	192.168.124.2	TCP	53244→902 [ACK] Seq=1 Ack=1 Win=65700 [TCP CHECKSUM INCORRECT] Len=0	54	.....A....
4	0	192.168.124.2	192.168.124.100	TCP	902→53244 [PSH, ACK] Seq=1 Ack=1 Win=65536 Len=132	186	.....AP....
5	0	192.168.124.100	192.168.124.2	TCP	53244→902 [PSH, ACK] Seq=1 Ack=133 Win=65568 [TCP CHECKSUM INCORRECT] Len=55	109	.....AP....
6	0	192.168.124.2	192.168.124.100	TCP	902→53244 [PSH, ACK] Seq=133 Ack=56 Win=65536 Len=1083	1137	.....AP....
7	0	192.168.124.100	192.168.124.2	TCP	53244→902 [PSH, ACK] Seq=56 Ack=1216 Win=64484 [TCP CHECKSUM INCORRECT] Len=326	380	.....AP....
8	0	192.168.124.2	192.168.124.100	TCP	902→53244 [PSH, ACK] Seq=1216 Ack=382 Win=65536 Len=59	113	.....AP....
9	0	192.168.124.100	192.168.124.2	TCP	53244→902 [PSH, ACK] Seq=382 Ack=1275 Win=64424 [TCP CHECKSUM INCORRECT] Len=1...	155	.....AP....
10	0	192.168.124.2	192.168.124.100	TCP	902→53244 [ACK] Seq=1275 Ack=483 Win=65536 Len=0	60	.....A....
11	0	192.168.124.100	192.168.124.2	TCP	53244→902 [PSH, ACK] Seq=483 Ack=1275 Win=64424 [TCP CHECKSUM INCORRECT] Len=53	107	.....AP....
12	0	192.168.124.2	192.168.124.100	TCP	902→53244 [PSH, ACK] Seq=1275 Ack=536 Win=65536 Len=69	123	.....AP....
13	0	192.168.124.100	192.168.124.2	TCP	53244→902 [PSH, ACK] Seq=536 Ack=1344 Win=64356 [TCP CHECKSUM INCORRECT] Len=2...	318	.....AP....
14	0	192.168.124.2	192.168.124.100	TCP	902→53244 [ACK] Seq=1344 Ack=800 Win=65536 Len=0	60	.....A....
15	0	192.168.124.100	192.168.124.2	TCP	53244→902 [PSH, ACK] Seq=800 Ack=1344 Win=64356 [TCP CHECKSUM INCORRECT] Len=9...	990	.....AP....
16	0	192.168.124.2	192.168.124.100	TCP	902→53244 [ACK] Seq=1344 Ack=1736 Win=64512 Len=0	60	.....A....
17	0	192.168.124.2	192.168.124.100	TCP	902→53244 [PSH, ACK] Seq=1344 Ack=1736 Win=65536 Len=264	318	.....AP....
18	0	192.168.124.100	192.168.124.2	TCP	53244→902 [PSH, ACK] Seq=1736 Ack=1608 Win=65700 [TCP CHECKSUM INCORRECT] Len=...	318	.....AP....
19	0	192.168.124.100	192.168.124.2	TCP	53244→902 [PSH, ACK] Seq=2000 Ack=1608 Win=65700 [TCP CHECKSUM INCORRECT] Len=...	4434	.....AP....
20	0	192.168.124.2	192.168.124.100	TCP	902→53244 [ACK] Seq=1608 Ack=4920 Win=62464 Len=0	60	.....A....
21	0	192.168.124.100	192.168.124.2	TCP	53244→902 [ACK] Seq=6380 Ack=1608 Win=65700 [TCP CHECKSUM INCORRECT] Len=5840	5894	.....A....
22	0	192.168.124.2	192.168.124.100	TCP	902→53244 [ACK] Seq=1608 Ack=10760 Win=56832 Len=0	60	.....A....
23	0	192.168.124.100	192.168.124.2	TCP	53244→902 [ACK] Seq=12220 Ack=1608 Win=65700 [TCP CHECKSUM INCORRECT] Len=11680	11734	.....A....
24	0	192.168.124.2	192.168.124.100	TCP	902→53244 [ACK] Seq=1608 Ack=15140 Win=52224 Len=0	60	.....A....
25	0	192.168.124.100	192.168.124.2	TCP	53244→902 [ACK] Seq=23900 Ack=1608 Win=65700 [TCP CHECKSUM INCORRECT] Len=8760	8814	.....A....
26	0	192.168.124.2	192.168.124.100	TCP	902→53244 [ACK] Seq=1608 Ack=20980 Win=46592 Len=0	60	.....A....
27	0	192.168.124.2	192.168.124.100	TCP	902→53244 [ACK] Seq=1608 Ack=23900 Win=43520 Len=0	60	.....A....
28	0	192.168.124.100	192.168.124.2	TCP	53244→902 [ACK] Seq=32660 Ack=1608 Win=65700 [TCP CHECKSUM INCORRECT] Len=17520	17574	.....A....
29	0	192.168.124.2	192.168.124.100	TCP	902→53244 [ACK] Seq=1608 Ack=26820 Win=40448 Len=0	60	.....A....
30	0	192.168.124.2	192.168.124.100	TCP	902→53244 [ACK] Seq=1608 Ack=32660 Win=34816 Len=0	60	.....A....
31	0	192.168.124.100	192.168.124.2	TCP	53244→902 [ACK] Seq=50180 Ack=1608 Win=65700 [TCP CHECKSUM INCORRECT] Len=16060	16114	.....A....
32	0	192.168.124.2	192.168.124.100	TCP	902→53244 [ACK] Seq=1608 Ack=37040 Win=30208 Len=0	60	.....A....
33	0	192.168.124.2	192.168.124.100	TCP	902→53244 [ACK] Seq=1608 Ack=42880 Win=24576 Len=0	60	.....A....
34	0	192.168.124.2	192.168.124.100	TCP	902→53244 [ACK] Seq=1608 Ack=48720 Win=18944 Len=0	60	.....A....
35	0	192.168.124.2	192.168.124.100	TCP	902→53244 [ACK] Seq=1608 Ack=54560 Win=12800 Len=0	60	.....A....
36	0	192.168.124.2	192.168.124.100	TCP	902→53244 [ACK] Seq=1608 Ack=60400 Win=7168 Len=0	60	.....A....
37	0	192.168.124.2	192.168.124.100	TCP	902→53244 [ACK] Seq=1608 Ack=66240 Win=1024 Len=0	60	.....A....
38	0	192.168.124.2	192.168.124.100	TCP	[TCP Window Update] 902→53244 [ACK] Seq=1608 Ack=66240 Win=65536 Len=0	60	.....A....
39	0	192.168.124.100	192.168.124.2	TCP	53244→902 [ACK] Seq=66240 Ack=1608 Win=65700 [TCP CHECKSUM INCORRECT] Len=64240	64294	.....A....
40	0	192.168.124.2	192.168.124.100	TCP	902→53244 [ACK] Seq=1608 Ack=73540 Win=59392 Len=0	60	.....A....



# False Positive 2 explained

## The offloading effect







# 3. Retransmissions & Duplicate ACKs





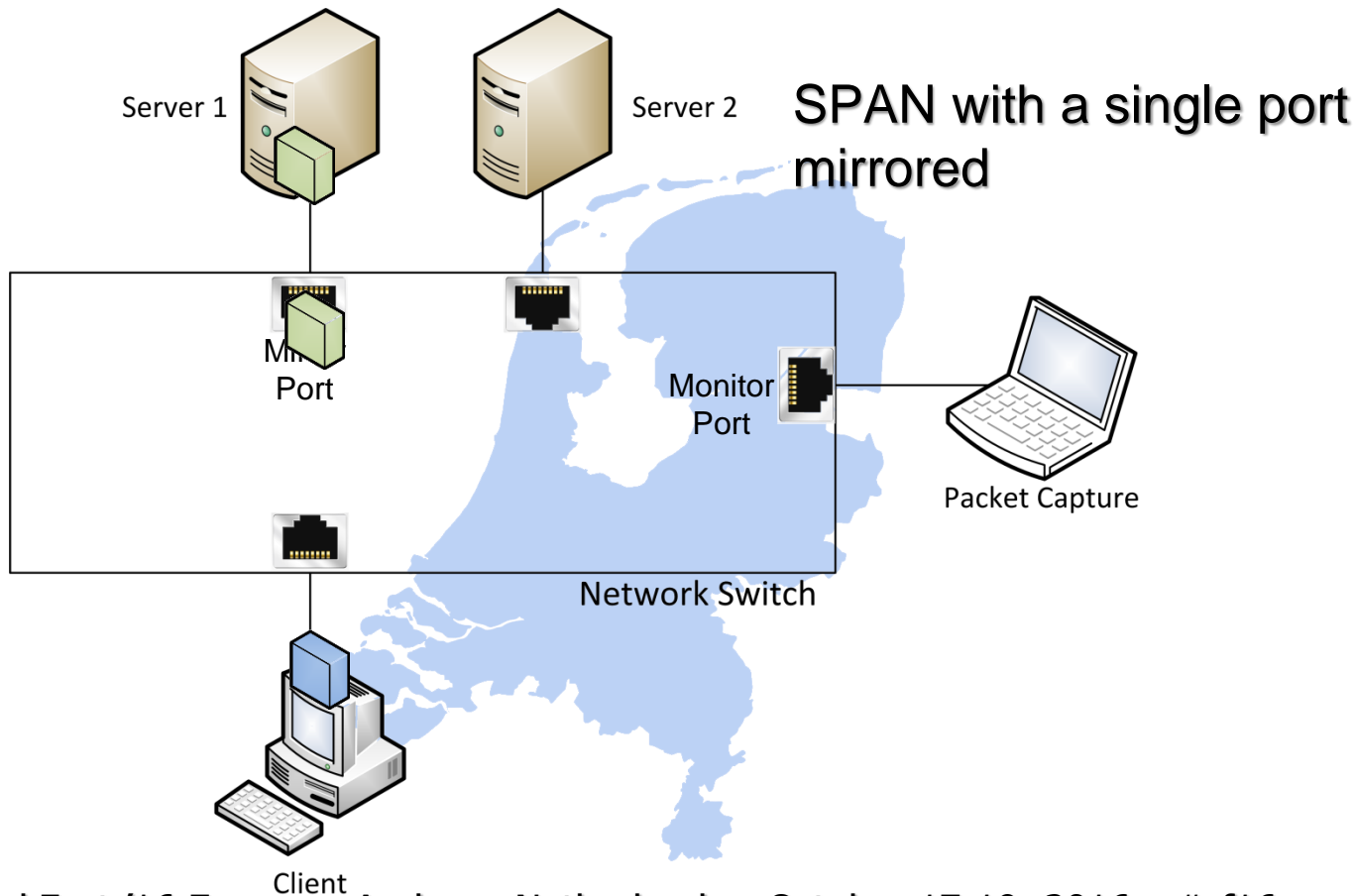
# 3 – Wireshark Demo

No.	IF	Source	Destination	Protocol	Info	Length	TCP Flags	Delta Time
1	0	192.168.1.1	10.0.0.1	SMB	Read AndX Request, FID: 0x402b, 16384 bytes at offset 66441216	121	.....AP...	0.000000
2	0	192.168.1.1	10.0.0.1	TCP	[TCP Retransmission] 1145→445 [PSH, ACK] Seq=1 Ack=1 Win=64512 Len=63	121	.....AP...	0.000013
3	0	10.0.0.1	192.168.1.1	NBSS	Session message[Packet size limited during capture]	1518	.....A....	0.000201
4	0	10.0.0.1	192.168.1.1	TCP	[TCP Retransmission] 445→1145 [ACK] Seq=1 Ack=64 Win=64177 Len=1460	1518	.....A....	0.000013
5	0	10.0.0.1	192.168.1.1	TCP	[Continuation to #3] 445→1145 [ACK] Seq=1461 Ack=64 Win=64177 Len=1460	1518	.....A....	0.000013
6	0	10.0.0.1	192.168.1.1	TCP	[Continuation to #3] 445→1145 [ACK] Seq=2921 Ack=64 Win=64177 Len=1460	1518	.....A....	0.000014
7	0	10.0.0.1	192.168.1.1	TCP	[Continuation to #3] [TCP Out-Of-Order] 445→1145 [ACK] Seq=1461 Ack=64 Win=	1518	.....A....	0.000012
8	0	10.0.0.1	192.168.1.1	TCP	[Continuation to #3] 445→1145 [ACK] Seq=4381 Ack=64 Win=64177 Len=1460	1518	.....A....	0.000013
9	0	10.0.0.1	192.168.1.1	TCP	[Continuation to #3] [TCP Out-Of-Order] 445→1145 [ACK] Seq=2921 Ack=64 Win=	1518	.....A....	0.000013
10	0	10.0.0.1	192.168.1.1	TCP	[Continuation to #3] 445→1145 [ACK] Seq=5841 Ack=64 Win=64177 Len=1460	1518	.....A....	0.000012
11	0	10.0.0.1	192.168.1.1	TCP	[Continuation to #3] [TCP Out-Of-Order] 445→1145 [ACK] Seq=4381 Ack=64 Win=	1518	.....A....	0.000012
12	0	10.0.0.1	192.168.1.1	TCP	[Continuation to #3] [TCP Retransmission] 445→1145 [ACK] Seq=5841 Ack=64 Wi	1518	.....A....	0.000014
13	0	10.0.0.1	192.168.1.1	TCP	[Continuation to #3] 445→1145 [ACK] Seq=7301 Ack=64 Win=64177 Len=1460	1518	.....A....	0.000012
14	0	10.0.0.1	192.168.1.1	TCP	[Continuation to #3] [TCP Retransmission] 445→1145 [ACK] Seq=7301 Ack=64 Wi	1518	.....A....	0.000012
15	0	10.0.0.1	192.168.1.1	TCP	[Continuation to #3] 445→1145 [ACK] Seq=8761 Ack=64 Win=64177 Len=1460	1518	.....A....	0.000013
16	0	10.0.0.1	192.168.1.1	TCP	[Continuation to #3] [TCP Retransmission] 445→1145 [ACK] Seq=8761 Ack=64 Wi	1518	.....A....	0.000012
17	0	10.0.0.1	192.168.1.1	TCP	[Continuation to #3] 445→1145 [ACK] Seq=10221 Ack=64 Win=64177 Len=1460	1518	.....A....	0.000012
18	0	10.0.0.1	192.168.1.1	TCP	[Continuation to #3] [TCP Retransmission] 445→1145 [ACK] Seq=10221 Ack=64 v	1518	.....A....	0.000013
19	0	10.0.0.1	192.168.1.1	TCP	[Continuation to #3] 445→1145 [ACK] Seq=11681 Ack=64 Win=64177 Len=1460	1518	.....A....	0.000014
20	0	10.0.0.1	192.168.1.1	TCP	[Continuation to #3] 445→1145 [ACK] Seq=13141 Ack=64 Win=64177 Len=1460	1518	.....A....	0.000017
21	0	10.0.0.1	192.168.1.1	TCP	[Continuation to #3] [TCP Out-Of-Order] 445→1145 [ACK] Seq=11681 Ack=64 Win=	1518	.....A....	0.000017



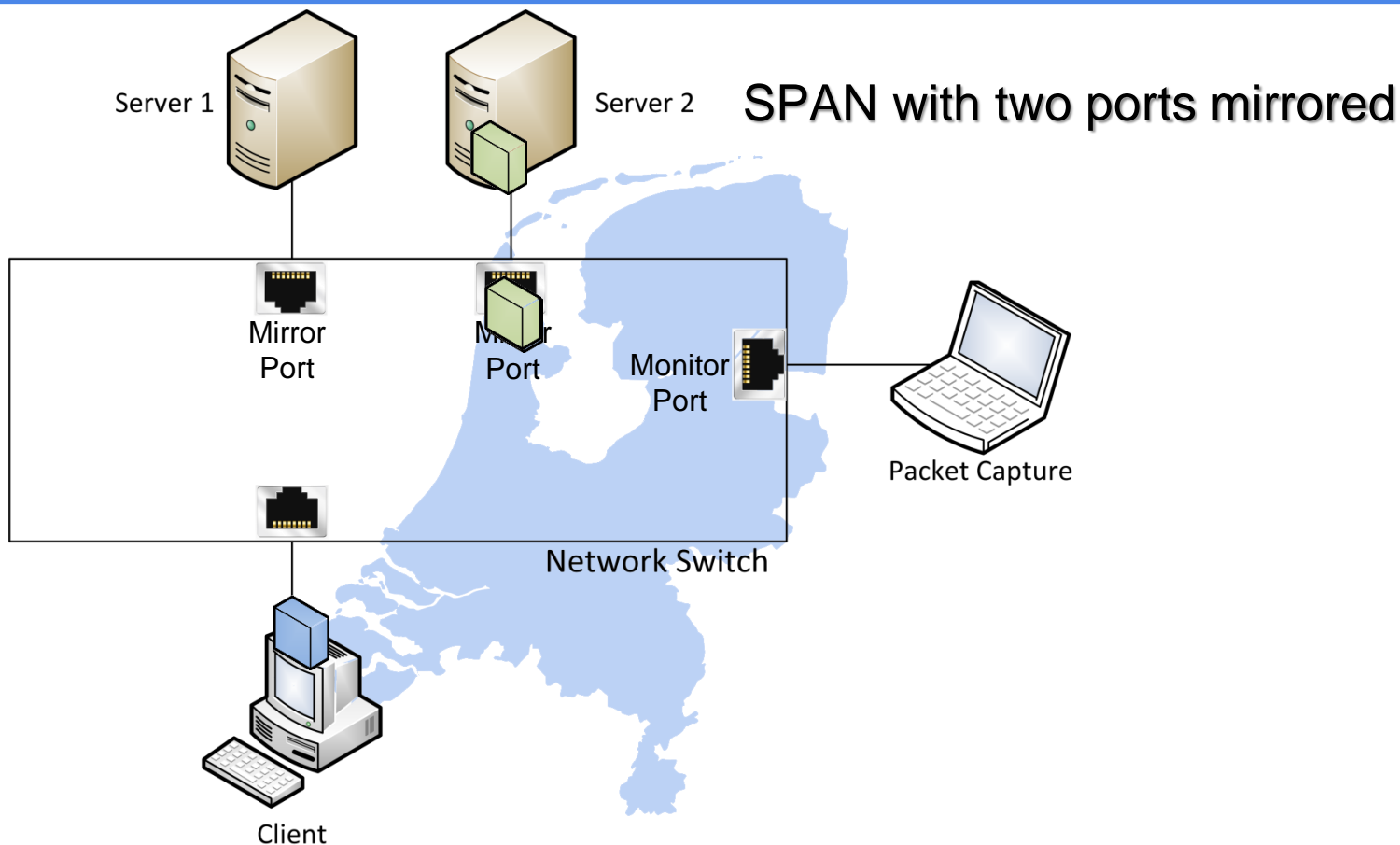


# False Positive 3 explained (1/3)



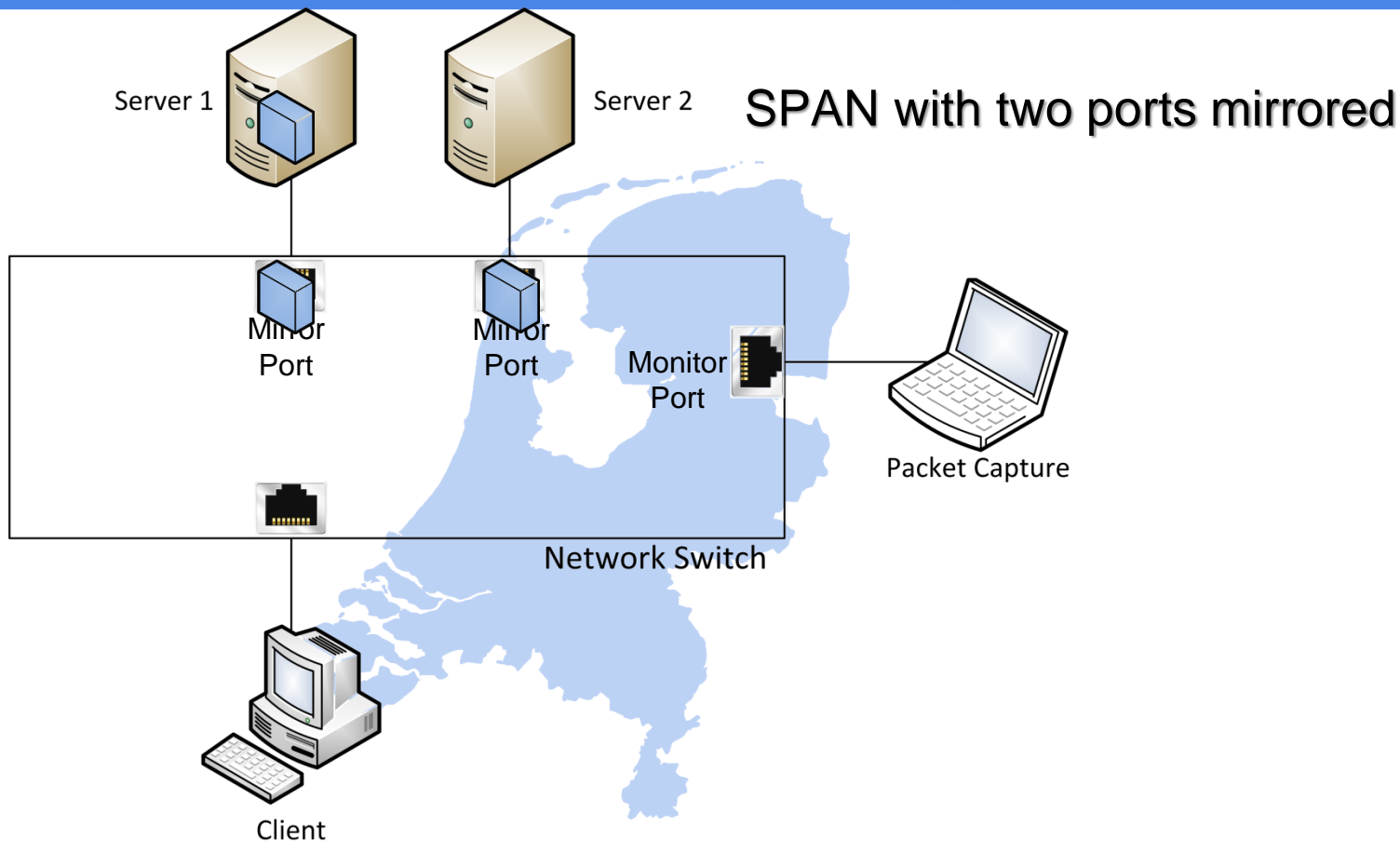


# False Positive 3 explained (2/3)





# False Positive 3 explained (3/3)





# 4. Zero Window





# 4 – Wireshark Demo

No.	IF	Source	Destination	Protocol	Info	Length	TCP Flags	Delta Time	Relative Time
1	0	192.168.0.10	10.0.0.1	TCP	1033→9100 [SYN] Seq=0 Win=65535 Len=0 MSS=1460 SACK_PERM=1	62	.....S.	0.000000	0.000000
2	0	10.0.0.1	192.168.0.10	TCP	9100→1033 [SYN, ACK] Seq=0 Ack=1 Win=1460 Len=0 MSS=1460	60	.....A..S.	0.000122	0.000122
3	0	192.168.0.10	10.0.0.1	TCP	1033→9100 [ACK] Seq=1 Ack=1 Win=65535 Len=0	60	.....A....	0.000005	0.000127
4	0	192.168.0.10	10.0.0.1	TCP	[TCP Window Full] 1033→9100 [ACK] Seq=1 Ack=1 Win=65535 Len=1460	1514	.....A....	0.000978	0.001105
5	0	10.0.0.1	192.168.0.10	TCP	9100→1033 [ACK] Seq=1 Ack=1461 Win=1460 Len=0	60	.....A....	0.000327	0.001432
6	0	192.168.0.10	10.0.0.1	TCP	[TCP Window Full] 1033→9100 [ACK] Seq=1461 Ack=1 Win=65535 Len=1460	1514	.....A....	0.000204	0.001636
7	0	10.0.0.1	192.168.0.10	TCP	[TCP ZeroWindow] 9100→1033 [ACK] Seq=1 Ack=2921 Win=0 Len=0	60	.....A....	0.196925	0.198561
8	0	192.168.0.10	10.0.0.1	TCP	[TCP ZeroWindowProbe] 1033→9100 [ACK] Seq=2921 Ack=1 Win=65535 Len=1	60	.....A....	2.288995	2.487556
9	0	10.0.0.1	192.168.0.10	TCP	[TCP ZeroWindowProbeAck] [TCP ZeroWindow] 9100→1033 [ACK] Seq=1 Ack=2921 Wi	60	.....A....	0.132047	2.619603
10	0	10.0.0.1	192.168.0.10	TCP	[TCP Window Update] 9100→1033 [ACK] Seq=1 Ack=2921 Win=14600 Len=0	60	.....A....	0.302639	2.922242
11	0	192.168.0.10	10.0.0.1	TCP	1033→9100 [ACK] Seq=2921 Ack=1 Win=65535 Len=1460	1514	.....A....	0.000198	2.922440
12	0	192.168.0.10	10.0.0.1	TCP	1033→9100 [ACK] Seq=4381 Ack=1 Win=65535 Len=1460	1514	.....A....	0.000009	2.922449
13	0	10.0.0.1	192.168.0.10	TCP	9100→1033 [ACK] Seq=1 Ack=5841 Win=16060 Len=0	60	.....A....	0.001059	2.923508
14	0	192.168.0.10	10.0.0.1	TCP	1033→9100 [ACK] Seq=5841 Ack=1 Win=65535 Len=1460	1514	.....A....	0.000203	2.923711
15	0	192.168.0.10	10.0.0.1	TCP	1033→9100 [ACK] Seq=7301 Ack=1 Win=65535 Len=1460	1514	.....A....	0.000007	2.923718
16	0	192.168.0.10	10.0.0.1	TCP	1033→9100 [ACK] Seq=8761 Ack=1 Win=65535 Len=1460	1514	.....A....	0.000006	2.923724
17	0	10.0.0.1	192.168.0.10	TCP	9100→1033 [ACK] Seq=1 Ack=10221 Win=16060 Len=0	60	.....A....	0.000681	2.924405





# 5. Retransmission cost







# 5 – Wireshark Demo

No.	IF	Source	Destination	Protocol	Info	Length	TCP Flags	Delta Time	Relative Time
1	0	192.168.1.44	93.184.220.20	TCP	59707→80 [SYN] Seq=0 Win=65535 Len=0 MSS=1460 WS=2 TSval=751518334 TSecr=0	78	.....S.	0.000000	0.000000
2	0	93.184.220.20	192.168.1.44	TCP	80→59707 [SYN, ACK] Seq=0 Ack=1 Win=14600 Len=0 MSS=1452 SACK_PERM=1 WS=64	66	.....A..S.	0.058812	0.058812
3	0	192.168.1.44	93.184.220.20	TCP	59707→80 [ACK] Seq=1 Ack=1 Win=66792 Len=0	54	.....A....	0.000157	0.058169
4	0	192.168.1.44	93.184.220.20	HTTP	GET /sample128k.html?r=0.77097258111462 HTTP/1.1	410	.....AP....	0.001215	0.059384
5	0	93.184.220.20	192.168.1.44	TCP	80→59707 [ACK] Seq=1 Ack=357 Win=15680 Len=0	60	.....A....	0.059001	0.118385
6	0	93.184.220.20	192.168.1.44	HTTP	HTTP/1.1 200 OK (text/html)	1506	.....A....	0.002899	0.121284
7	0	93.184.220.20	192.168.1.44	HTTP	Continuation	1506	.....A....	0.001117	0.122401
8	0	192.168.1.44	93.184.220.20	TCP	59707→80 [ACK] Seq=357 Ack=2905 Win=65340 Len=0	54	.....A....	0.000101	0.122502
9	0	93.184.220.20	192.168.1.44	HTTP	[TCP Previous segment not captured] Continuation	1506	.....A....	0.004806	0.127308
10	0	192.168.1.44	93.184.220.20	TCP	[TCP Window Update] 59707→80 [ACK] Seq=357 Ack=2905 Win=66792 Len=0 SLE=43!	66	.....A....	0.000058	0.127366
11	0	93.184.220.20	192.168.1.44	HTTP	Continuation	1506	.....A....	0.001669	0.129035
12	0	192.168.1.44	93.184.220.20	TCP	[TCP Dup ACK #1] 59707→80 [ACK] Seq=357 Ack=2905 Win=66792 Len=0 SLE=4357	66	.....A....	0.000042	0.129077
13	0	93.184.220.20	192.168.1.44	HTTP	Continuation	1506	.....A....	0.002409	0.131486
14	0	192.168.1.44	93.184.220.20	TCP	[TCP Dup ACK #2] 59707→80 [ACK] Seq=357 Ack=2905 Win=66792 Len=0 SLE=4357	66	.....A....	0.000047	0.131533
15	0	93.184.220.20	192.168.1.44	HTTP	Continuation	1506	.....A....	0.001550	0.133083
16	0	192.168.1.44	93.184.220.20	TCP	[TCP Dup ACK #3] 59707→80 [ACK] Seq=357 Ack=2905 Win=66792 Len=0 SLE=4357	66	.....A....	0.000040	0.133123
17	0	93.184.220.20	192.168.1.44	HTTP	Continuation	1506	.....A....	0.001110	0.134233
18	0	192.168.1.44	93.184.220.20	TCP	[TCP Dup ACK #4] 59707→80 [ACK] Seq=357 Ack=2905 Win=66792 Len=0 SLE=4357	66	.....A....	0.000043	0.134276
19	0	93.184.220.20	192.168.1.44	HTTP	Continuation	1506	.....A....	0.002494	0.136770
20	0	192.168.1.44	93.184.220.20	TCP	[TCP Dup ACK #5] 59707→80 [ACK] Seq=357 Ack=2905 Win=66792 Len=0 SLE=4357	66	.....A....	0.000040	0.136810
21	0	93.184.220.20	192.168.1.44	HTTP	Continuation	1506	.....A....	0.001617	0.138427
22	0	192.168.1.44	93.184.220.20	TCP	[TCP Dup ACK #6] 59707→80 [ACK] Seq=357 Ack=2905 Win=66792 Len=0 SLE=4357	66	.....A....	0.000043	0.138470
23	0	93.184.220.20	192.168.1.44	HTTP	Continuation	1506	.....A....	0.040578	0.179048
24	0	192.168.1.44	93.184.220.20	TCP	[TCP Dup ACK #7] 59707→80 [ACK] Seq=357 Ack=2905 Win=66792 Len=0 SLE=4357	66	.....A....	0.000068	0.179116
25	0	93.184.220.20	192.168.1.44	HTTP	Continuation	1506	.....A....	0.001521	0.180637
26	0	192.168.1.44	93.184.220.20	TCP	[TCP Dup ACK #8] 59707→80 [ACK] Seq=357 Ack=2905 Win=66792 Len=0 SLE=4357	66	.....A....	0.000035	0.180672
27	0	93.184.220.20	192.168.1.44	HTTP	Continuation	1506	.....A....	0.000791	0.181463
28	0	192.168.1.44	93.184.220.20	TCP	[TCP Dup ACK #9] 59707→80 [ACK] Seq=357 Ack=2905 Win=66792 Len=0 SLE=4357	66	.....A....	0.000034	0.181497
29	0	93.184.220.20	192.168.1.44	HTTP	Continuation	1506	.....A....	0.002702	0.184199
30	0	192.168.1.44	93.184.220.20	TCP	[TCP Dup ACK #10] 59707→80 [ACK] Seq=357 Ack=2905 Win=66792 Len=0 SLE=4357	66	.....A....	0.000032	0.184231
31	0	93.184.220.20	192.168.1.44	HTTP	Continuation	1506	.....A....	0.001528	0.185759
32	0	192.168.1.44	93.184.220.20	TCP	[TCP Dup ACK #11] 59707→80 [ACK] Seq=357 Ack=2905 Win=66792 Len=0 SLE=4357	66	.....A....	0.000030	0.185789
33	0	93.184.220.20	192.168.1.44	HTTP	[TCP Fast Retransmission] Continuation	1506	.....A....	0.002328	0.188117
34	0	192.168.1.44	93.184.220.20	TCP	59707→80 [ACK] Seq=357 Ack=21781 Win=47916 Len=0	54	.....A....	0.000039	0.188156
35	0	93.184.220.20	192.168.1.44	HTTP	Continuation	1506	.....A....	0.001500	0.189654



A close-up, low-angle shot of a shark's mouth, showing rows of sharp, white teeth. The shark's skin is visible at the top, and the background is dark. The lighting is dramatic, highlighting the texture of the teeth and the skin.

# Q&A

Mail: [jasper@packet-foo.com](mailto:jasper@packet-foo.com)

Web: [blog.packet-foo.com](http://blog.packet-foo.com)

Twitter: [@packetjay](https://twitter.com/packetjay)